



The Sheridan Sentinel

The Official Newspaper of City of Hoxie & Sheridan County

Volume 136 No. 26

Hoxie, Sheridan County, Kansas 67740

Thursday, March 25, 2021

\$1.00 Single Copy

AMAZING Artists



Some wonderful Kindergarten Art! Thinking about overlap and the beautiful flower paintings of Georgia O'Keeffe. These artists added a 3D flower to their drawings and did a blue and pink paint wash over top of their crayon. They had to press very hard with their crayons so the paint would resist...Teacher, Kristin Johnson said, "Art was definitely a muscle-building class!" (HGS Art Facebook page, Kristin Johnson photos)

Henri Rousseau inspired these 4th Grade Artists with his delightful jungle paintings. Did you know he didn't see a real jungle but often worked from looking at house plants? And that he didn't have Art training but learned on his own. These paintings are full of overlapping and imaginative ideas! (HGS Art Facebook page, Kristin Johnson photos)

3rd Grade Artists were thinking about the principle of Art: Movement! Can you figure out what all these different people were doing? Look at their cool bending bodies, and these artists were so patient with all the lines! One said, "It's very satisfying" when Art teacher, Kristin Johnson mentioned that drawing all the lines was "worth it!" (HGS Art Facebook page, Kristin Johnson photos)

We have AMAZING Artists in Hoxie! At Hoxie Grade School, you can walk the halls and enjoy the beautiful artwork of over 200 artists, ages Kindergarten through 6th grade. Under the guidance of the school's talented Art Teacher, Kristin Johnson, their abilities, sand visions come to reality. Kristin hopes to share these masterpieces and give students new opportunities to create!

Day 4 Kansas YOUTH ART MONTH

Featured Artist

Kellen Cressler
4th Grade
Hoxie Grade School
12" x 16"
Teacher:
Kristin Johnson



Clay art fairy houses and whimsical animals! (HGS Art Facebook page, Kristin Johnson photos)

Kellen Cressler represented Hoxie Grade School on the Kansas Art Association Facebook page! His picture was chosen by the Colby Elementary Art teacher to be entered in the KS Youth Art Month. (Kansas Art Association photo, Facebook page)

The Sheridan Sentinel 716 Main Street, PO Box 78, Hoxie, KS 67740 785-675-3321 editor@sheridansentinel.com

Words of Faith		Grain Report		Weather Report				Contents				Words of Wisdom	
<div>Creativity is allowing yourself to make mistakes.</div> <div>Art is knowing which ones to keep.</div>	Reported on: Tuesday, Mar. 23		Date	High	Low	Moisture	Community News	2-3	Public Notices	7	<div>CREATIVITY</div> <div>is intelligence</div> <div>HAVING FUN</div> <div>EINSTEIN</div>		
	Corn	5.50	3/14	57	38	--	Now & Then	4	Fun Page	8			
	Milo	6.72	3/15	51	33	--	NWKS News	5	Classifieds	9			
	Beans	13.38	3/16	51	30	--	Agriculture	6	Business Directory	10			
			3/17	44	30	--							
			3/18	54	23	--							
			3/19	64	38	--							
		3/20	68	42	--								
			IT'S SPRING TIME!!										

The Sheridan Sentinel

Viktorija Briggs, Owner/Publisher/Editor
editor@sheridansentinel.com
Rachel Farber, Office Manager, Archive Director
accounting@sheridansentinel.com
archives@sheridansentinel.com
Brittany Lewis, Advertising Manager
advertising.sentinell@gmail.com

Publication #490440
ISSN #2473-649X
Published every Thursday by:
The Sheridan Sentinel, LLC
716 Main Street, Hoxie, KS 67740
785-675-3321
sentinel@sheridansentinel.com

Postmaster:
Send address changes to:
The Sheridan Sentinel, LLC
PO Box 78, Hoxie, KS 67740
Subscription Rates:
Newspaper - \$52 per year
(online included)
Online (only) - \$20/year

Submission Guidelines

Print-ready ads and content deadline: noon Tuesday
Non-print-ready ads MUST be in by 3 pm Monday.
Due to time constraints, all ad & content submissions must be
emailed in .doc, .docx, or .pdf format; photos in .jpg or .png
format. **All non-print-ready ad submissions are subject to a**
design fee (starting at \$10).

Please email articles, news, and photos to:
editor@sheridansentinel.com
or bring them by our office at
716 Main Street, Hoxie.

We confirm receipt of all emailed submissions within 24-hours.

If you have not received confirmation, or if it is a
time-sensitive submission, please call us at 785-675-3321.
sheridansentinel.com

Find us on the newsstand
at these locations:

JD's ~ Red's ~ Joslyn's
Hoxie Stop 2 Shop
Mahanna Pharmacy

The Sheridan Sentinel

www.sheridansentinel.com



LIKE US ON facebook

**Bainter
Chiropractic**

Dr. Raquelle
Bainter

Tuesday 9:00 - 12:00
Thursday 2:00 - 5:30
Saturday by Appointment
800 Main St., Hoxie
785-677-3077

SENTINEL
Graphics & Design

- * Company Logos
- * Business Cards
- * Ad Design
- * Flyers
- * Posters
- * Stickers
- * Vinyl Graphics
- * Window Clings

716 Main Street,
Hoxie, KS 67740
785-675-3321
sentinel@sheridansentinel.com

EMERGENCY
DIAL 911

Sheriff's Dept.
785-675-3481
Fire Dept. Dist. #1
785-675-3773
EMS
785-675-3364
Emergency Mgmt.
785-386-8051
County Clerk
785-675-3361
Road & Bridge Dept.
785-675-3621
Public Library
785-675-3102



940 8th St. Hoxie, KS
785-675-2101

Office Hours:
Monday-Friday
8am-4:30pm
Closed for Lunch
12:30-1pm

WIC Clinic
Call for Appointment

CONTACT YOUR COMMISSIONER

Chairman: Wes Bainter ~ wesbainter@hotmail.com
Joe Bainter ~ bainterj83@gmail.com
Buck Mader ~ mcauto2@outlook.com

JD's RESTAURANT
785-675-3302
744 Main Street Hoxie

WEEK of MAR 25 ~ MAR 31

Thursday:
Smothered Pork Chops

Friday:
Fried Chicken & Ham &
Scalloped Potatoes

Monday:
Meatloaf & Ribs

Tuesday:
Build Your Burger

Wednesday:
Mexican

Guess the winner & points of the NCAA Championship -
Get Cash Prize! 1 \$50 winner and 2 \$25 winners

FRIDAY NIGHT SEAFOOD LENTEN BUFFET & SIDES
Cod, Catfish, Tilapia, Pollock, Shrimp, Clam Strips,
Fish Sticks & More
5:30pm ~ 7:30pm



An Easter Sunday Brunch on April 4 is planned at the Jennings
United Methodist Church. The brunch will be held at 10:00 a.m.
Easter Sunday morning.

Kay Brown was honored with a belated birthday celebration,
Saturday, at the Brown residence. John and Janelle Tacha,
Lawrence, were host. Guest included Ken and Julie Carter; Lila
Jennings; Kurt Brown, Millie and Dashedelle, Quinter and Gordon
Kuntz, Hays.

We are enjoying another nice rain this Monday morning.

KU Honors High School Seniors

This spring, the Kansas Honor Scholars Program, which marks
its 50th anniversary as a tradition of the University of Kansas
Alumni Association and KU Endowment, honored more than
3,600 high school seniors throughout Kansas for their academic
excellence and achievement.

Since 1971 the program has honored more than 150,000 high
school seniors—from all 105 Kansas counties and approximately
360 high schools—for ranking academically in the top 10% of their
class. The program is made possible by KU Endowment, alumni
donations and proceeds from the Alumni Association's Jayhawk
license plate program and allows the University and the Alumni
Association to create more scholarship opportunities for Kansas
students.

The Association mailed distinctive Kansas Honor Scholar
medallions, certificates and letters of recognition to all high
schools for distribution to the students.

Through the support of members and donors, the KU Alumni
Association advocates for the University of

Kansas, communicates with Jayhawks in all media, recruits
students and volunteers, serves the KU community and unites
Jayhawks. For more information, visit www.kualumni.org.

Local students are:

Sheridan County: Hoxie High School

Hannah Eller
Gabriel Friess
Reilly Pfannenstiel

Gove County: Wheatland High School

Elliot Godek

Thomas County: Golden Plains High School

Ashley Stoll

Brooke Stoll

Private Well Water Testing

**Water sample pick-up at Sheridan County Health
Department on April 15, 2021. Please have samples into the
Health Department by 9:30 AM CST.**

It is recommended for private water well owners to test their
drinking water every 1-3 years for bacteria and nitrates.

More frequent testing should be considered if:

- Change in the taste, odor, or appearance of the well water,
or if a problem occurs such as a broken well cap, inundation by
floodwaters, or a new contamination source
- Well has a history of bacterial contamination
- Septic system has recently malfunctioned
- Family members or house guests have recurrent inci-
dents of gastrointestinal illness
- An infant is living in the home
- To monitor the efficiency and performance of home water
treatment equipment

Total coliform is the most commonly used indicator of bacterial
contamination. The presence of coliform bacteria is an "indicator"
of a well's possible contamination from human or animal wastes.
Total coliform is a broad category of bacteria, most of which
pose no threat to humans. Some come from fecal matter, others
naturally occur in soils, vegetation, insects, etc. The presence of
coliform bacteria in well water can be a harbinger of worsening
water quality. Along with testing for coliform bacteria, E. coli is
tested for also.

Common sources of nitrate to well water are fertilizers, septic
systems, animal manure, and leaking sewer lines. Nitrate also
occurs naturally from the breakdown of nitrogen compounds in
soil and rocks. High levels of nitrate in well water present a health
concern and can also indicate the presence of other contaminants,
such as bacteria and pesticides. Drinking large amounts of water
with nitrates is particularly threatening to infants (for example,
when mixed in formula).

Total dissolved solids and electric conductivity tests are
performed to check water hardness which can cause problems
with plumbing, staining, and water appearance. Changes in
these constituents also may indicate changes in your well or local
groundwater. Additional tests may be recommended if water
appears cloudy or oily, if bacterial growth is visible on fixtures, or
water treatment devices are not working as they should.

Baalman Elected to Kansas Commodity Commissions

The Kansas Department of Agriculture has announced the
result of the elections held for the state's five grain commodity
commissions — corn, grain sorghum, soybeans, sunflowers, and
wheat — in districts one, two, and three in the western region of
the state.

Brian Baalman, Sheridan County, was elected to the Kansas
Corn Commission: District One.

**Upcoming Area
EVENTS**

Mark Your Calendars!

Every Sunday:

9am First Presbyterian
Church Service

Every Tuesday:

8am
Commissioners' Mtg
12pm Rotary
7pm Fire Dept Mtg

Every Wednesday:

7:30pm
Hoxie UMC
Community Worship

Monthly:

2nd Monday - City of Hoxie

1st Tuesday - HAMA

1st Wednesday - Chamber
of Commerce

2nd Monday - BOE Mtg

4th Monday - Hospital

Board of Trustees -
12pm

FQHC the following
Wednesday, 8am

EASTER EGG HUNT



**Hoxie Elks Lodge
&
Hoxie Chamber of Commerce**

EASTER EGG HUNT

Hoxie Golf Course

Saturday, April 3 at 10:00 am

Age Groups:

3 Years and Younger

4-5 Year Olds

Kindergarten & 1st Grade

2nd & 3rd Grade

Each Group Will Have a "Golden Egg"

CLOSED

for

Good Friday

Friday, April 2

**Courthouse * Public Health Office
Road & Bridge Department * Landfill**



**KNIGHTS
OF COLUMBUS**
IN SERVICE TO ONE. IN SERVICE TO ALL.

RIGHT to LIFE BBQ

Sunday, March 28, 2021 11 am - 1 pm

4-H Building

SIT DOWN * DRIVE THRU * DELIVERY

Pulled-Pork & All the Trimmings

Free Will Donation

Call Mathew Jeunemann 785-657-7430

Corner Lot Home for Sale

New home available in Sunrise Addition



- 1536 sq ft finished Ground Floor (w/appliances)
- 3 Bedrooms
- 2 Bathrooms
- Beautiful Kitchen, Dining, and Living Area
- Full Basement (unfinished, but mostly framed)
- Attached 2-Car Garage (w/remote control)
- Special assessments already paid in full

For more information
Contact Wes Bainter
785-675-8695



**Hoxie City-Wide
Clean-up
March 29, 30 & 31**



**KNIGHTS
OF COLUMBUS**
IN SERVICE TO ONE. IN SERVICE TO ALL.
RIGHT to LIFE BBQ
Sunday, March 28, 2021 11 am - 1 pm
4-H Building

FHSU Kansas Wetlands
Education Center
Virtual Wings &
Wetlands Festival
March 24-26 Register at:
www.wingsandwetlands.com

Farmers to Families Community Food Boxes
Every Tuesday through April
Hoxie Christian Church & Selden Mainstreet

WPAA
Upcoming
Programs:

The Duttons
Tuesday, April 6
7:30pm Oakley HS

Mealsite Menu

Mar 29 ~ Apr 2

Monday:

Chicken Strips, Hashbrown Casserole, Peas & Carrots, Bread, Mandarin Oranges

Tuesday:

Ham & Beans, Broccoli Salad, Cornbread, Emerald Peas

Wednesday:

Hamburger Patty w/lettuce/onion/tomato, Tomato Cucumber Salad, Bun, Watergate Salad

Thursday:

Baked Spaghetti, Asparagus, Bread, Fruit Cobbler or Crisp

Friday:

Baked Fish, Macaroni & Cheese, Peas, Bread, Pine-apple

The Hoxie Mealsite wishes to invite those 60 and older with guests to attend daily luncheons in the community room at Ridgewood Manor Monday-Friday. Please call 675-3154 by 11 a.m. the day before, to make reservations. Home Delivery is available to those not able to dine in. We also invite those working, who would like to pick up. Patrons over 60, a \$3.50 per meal contribution is requested. Those under 60, meal cost is \$6.50. A monthly menu can be picked up at the Mealsite. Pinochle is played every Tuesday (bring a quarter) & Friday after lunch. Checks payable to HOMESTEAD Nutrition Project.

Dining in Sheridan County

Hoxie Elks Lodge

W Sheridan Ave.

675-3161

Wednesday 6-8pm

Saturday 6-9pm

JD's

744 Main, Hoxie

675-3302

7 Days a Week

7am-2pm & 5-8pm

Midway Cafe

Hwy 83, Selden

386-4545

Monday-Friday

7am-2pm & 5-7pm

Saturday 7am-2pm

OSCAR'S

845 Main, Hoxie

675-2022

Monday-Friday

6:30am - 1pm

Saturday 7am-Noon

THE ELEPHANT

BISTRO & BAR

732 Main, Hoxie

677-3977

Tuesday - Saturday

11am - 9pm

THE HITCHIN' POST

BAR & GRILL

901 Main, Hoxie

657-7711

7 Days a Week

11am-2pm & 5-8:30pm

*No Sunday Evening

Town & Country

1117 Oak Ave., Hoxie

675-3265

Mon-Thurs. 7am-7pm

Friday 7am-8pm

Sat. 7-1pm Sun. 4-8pm

Area Churches

Christ Community Church

2008 Sheridan Ave

Hoxie

First Presbyterian Church

1101 Sheridan Ave

Hoxie

Hoxie Christian Church

1025 Queen

Hoxie

Hoxie Church of Christ

1541 Oak

Hoxie

Hoxie United Methodist Church

1325 15th St

Hoxie

Immaculate Conception Catholic Church

Hwy 223

Leoville

Immanuel Lutheran Church

1400 Locust St

Hoxie

Living Word Fellowship

454 Hwy 24

Hoxie

Mt. Pleasant Baptist Church

14988 E Rd 70 S

Hoxie

Sacred Heart Catholic Church

202 S Missouri

Selden

St. Frances Catholic Church

924 17th

Hoxie

Selden United Methodist Church

Selden

St. Martin's Catholic Church

Seguin

Summer STEAM Virtual Academy Offered Nationally

The popular Kansas State University Summer STEM Institute – designed to ignite local middle schoolers’ interest in science, technology, engineering and math – has inspired the creation of the Summer STEAM Virtual Academy that is open to any current fifth through eighth grader across the country.

The academy will be offered Monday through Thursday, June 7-24, from 9 a.m. to noon CDT. The registration fee is \$75 for all three weeks. The topics are Wild, Weird and Wonderful Writing; M.U.S.I.C. (Music Using STEM is Cool); Sports Science; Stop Motion Animation; and Planet Podcast. Calista Speake, a remote kindergarten teacher at Amanda Arnold Elementary School in Manhattan, serves as principal of the virtual academy.

School districts are also encouraged to join the virtual academy with a hybrid option, in which groups of students participate in the online sessions at a school, supported by a teacher or staff member from that district. Because of the use of an on-site teacher or staff member, the cost will be greatly reduced.

Lori Goodson, Assistant Professor of Curriculum and Instruction and K-State Summer STEM Institute coordinator, who also serves as Assistant Director of the College of Education's Rural Education Center, is excited to provide such a great summer opportunity to an even wider audience, including rural communities throughout Kansas.

Like the Summer STEM Institute, the virtual version focuses on STEAM – science, technology, engineering, arts, and math – and offers hands-on, high-engagement activities led by highly-qualified teachers throughout the region. Classes are designed to make use of many common household items to keep expenses at a minimum for participants.

“Since this is the first year for the virtual academy, we are starting off with five topics,” Goodson said. “But we’re excited to see this program build. As a virtual program, the academy isn’t limited to students in Kansas, so we see lots of potential.”

In summer 2020, middle schoolers throughout Kansas and as far away as Minnesota participated in the virtual classes.

To learn more about the classes and to register, visit the STEAM Virtual Academy website at <http://bit.ly/31cNsv7>. For questions, contact Speake at virtualsteam@k-state.edu.

WPAA Presents Dutton Family Performers

The Duttons are a family of three generations of musical performers from Branson, Mo. Committed to family appropriate, quality entertainment, The Duttons have performed in all 50 United States and most of the provinces of Canada over their 30-year career, giving thousands of concerts. During the height of their touring career, The Duttons performed as many as 250 annual road dates and had four European tours.

Oakley High School Auditorium will host this Western Plains Arts Association program, for a special evening performance Tuesday, April 6 at 7:30 p.m. CDT. Admission by WPAA season ticket or adults \$20 and students \$10. In addition to businesses and individual sponsors across the area, generous funding comes from the Dane. G. Hansen Foundation and also the Greater Northwest Kansas Community Foundation-Logan County.

See the artist website www.theduttons.com for further information about their live theater shows, music videos, quality pictures and more.

SHERIDAN COUNTY Recycling

A Community That Cares

RECYCLING CENTER HOURS

November – March 8:00 am – 6:00 pm

April – October 8:00 am – 9:00 pm

Saturday 8:00 am – 6:00 pm

Sunday 1:00 pm – 6:00 pm

ITEMS ACCEPTED

•Paper:

shredded, magazines, newspaper, office paper

•Chipboard:

cereal boxes, frozen food boxes, beverage boxes, etc.

•Cardboard:

corrugated only

•Clear Plastic:

#1 clear pop bottles, juice bottles

•Colored Plastic:

#2 laundry detergent bottles, coffee containers, etc.

•#2 Natural Plastic:

Milk jugs, rinsed chemical containers

•Glass:

beer/liquor bottles, pickle jars, etc.

•Aluminum Cans:

pop, beer

•Tin Cans:

soup cans, tuna cans, cat food cans, etc.

•Grocery Sacks:

plastic grocery sacks

NO OTHER TYPES OF PLASTIC

NO OTHER TYPES OF METAL

NO CLOTHES

NO BOOKS

Rep. Tracey Mann’s Statement on Earmarks in 117th Congress

Rep. Tracey Mann released the following statement regarding earmarks:

“Congress is currently discussing earmarks and my position is clear: I will not be participating in earmarks during the 117th Congress.

I am concerned that a return to earmarks in the House will once again spiral out of control and lead to more government spending. Washington, D.C. has a spending problem and earmarking money for special projects around the country is no way to fix it. I did not run for office so I could be the caretaker in the slow demise of our great nation. I ran to advocate for

agriculture and our Kansas conservative values.

Government spending should be done transparently through regular order using the appropriations and legislative processes. Our Nation must do better and get our spending under control because we are mortgaging the future for political favors. It's time to stop the politics, get back to regular order, and get back on track.”

10% OFF

Coupon

Save 10% on any Pizza order now thru April 15, 2021.

HUNT BROTHERS PIZZA

TOWN & COUNTRY STORE

1117 Oak Ave., Hoxie

785-675-3265

Clip & Save

SHERIDAN ESTATES

2025 Sheridan Ave, Hoxie, KS 67740

2 BR / 2 BA Apartment Available Soon

Call Casey 785-675-1160 for more information

NO Foolin' APRIL 1ST Subscription Special! ONE DAY ONLY One-Year Print Subscription 25% off! ~ \$39

Hoxie MEDICAL CLINIC

Dr. Victor Nemechek, MD * Dr. Michael Machen, MD

Dr. Jill Stewart, MD * Dr. Dallas Walz, MD

Deanna Sulzman, APRN-C, Shannon Herl, APRN-BC

Chris Hansen, PA-C * Bhavini Gopaldas, PA-C

Jodi Dumler, LCSW * Taylor Bainter, LMSW

Hours: Monday - Friday 7:00 am - 5:00 pm

Call for Appointment: 785-675-3018

Selden Community Clinic

Hours: Tuesday ~ Thursday 8:00 am - 2:00 pm

Call for Appointment: 785-386-4380

Hoxie MEDICAL CLINIC

PHYSICAL THERAPY:

Direct Access to PT

Speech & Occupational Therapy

Women's Health/Pelvic Floor Rehab

CARDIOLOGY * LABORATORY * GENERAL SURGERY * PODIATRY * AUDIOLOGY * PAIN MANAGEMENT INJECTIONS * HEALTH COACH

RADIOLOGY:

X-Ray * CT Scan * MRI

Ultrasound * 3D Mammography

Bone Density (DEXA) * Nuclear Medicine

Call for Appointment: 785-675-3281

Don't Have Insurance? We Can Help!

Hoxie Medical Clinic now employs a Case Manager and Navigator to assist with insurance enrollment on the healthcare marketplace, other needed services, and we also accept VA Choice. Free mammograms and Pap tests are available to women with no insurance.

Open Enrollment for Marketplace February 15, 2021 - May 15th, 2021

Spring into coverage this year!

Contact Community Resources! Trista Wysong (785) 677-4172

KENOXIE ARCHIVES & MUSEUM's Now & Then

The Sheridan Sentinel

Thursday, March 25, 2021 Page 4

Compiled by Rachel Farber, Archive Director

The Hoxie Democrat Friday, March 25, 1887

Milo Yates is here on a visit for a few days.
J. Linley is fencing in an eighty acre pasture.
J. B. McGraw is here to stay, and will read the *Democrat*.

John Colgan is once more seen on our streets, and is here to stay if the girls let him alone.

W. M. Nankivel, the photographer, has gone to Colby and may the blessings of this life attend him.

Mr. Shaffer bought a fine span of oxen on our streets last week. That is the kind of a team for this country.

Mr. E. B. Woodward is making a short visit to Hoxie. He is the senior member of the arm of Woodward & Thorpe.

M. A. Chambers and Geo Spangler arrived last Thursday on the stage. M. A. will stay and Geo will make a couple of weeks visit.

Frank Robinson went to Grainfield on Wednesday to assist in removing the lumber yard of the Grainfield Lumber company when the Chicago Lumber company have purchased.

A gentleman by the name of Lauer is putting up a fine building in Mystic, 24x60, ceiling 12 feet. Mr. Lauer will immediately put in a large stock of merchandise. He will also put up a fine residence soon.

In our rounds this week, we saw one of the finest displays of agricultural implements we have ever had the opportunity of seeing in Kansas, in front of Chapel and Griffes'. Farmers, when in need of anything in that line go see what we have seen.

Mr. C. H. Bird, of Saltillo, Neb., is here and has purchased some school land north of town. Mr. Bird will move his family here in a few weeks.

We learn from Messrs. Rich & Berry that they have several jobs of well-boring on hand at present, among which is one for Gunsolly, Little, Huff, Brooks and Newland.

Mrs. J. B. Hopson is growing better and strong hopes are entertained for her recovery.

Mr. W. H. Barnes, the solicitor for the Kansas Western railroad, left for his home in Stockton last Saturday morning. While here he has made many friends and we feel like congratulating the company on having so good a man to look after their interests. He accomplished in this county many things which looked like impossibilities, and his many friends here hope that he may make Sheridan county his future home.

Sheridan County Agricultural Fair Association

The regular meeting of the Sheridan County Agricultural Fair association for the election of officers and such other business as may be brought before it, will be held at the office of E. H. McCracken, in the city of Hoxie, on Tuesday, April 12, 1887, at 2 o'clock p.m.

E. H. McCracken, President

125 Years Ago March 26, 1896

Judge Hedge is again able to be up and around. The nimrods report quite a catch of fish the first of the week.

S. G. Hopkins and wife took in the dance at Selden last Friday night. They report a good time.

Hoxie has a \$700 water plant but the water is in another man's tank and the question is, how are we going to get it out.

Johnny Koch proved up on his timber claim in Solomon township last Saturday. The proof was made before Judge Hedge.

T. J. McKinney informs us that he has had fresh tomatoes all winter. He promises to give us a description of how he did it, in the near future.

M. B. Tomblin, member of the State Irrigation Board writes the editor of this paper that he will be here some time next week to decide on the location of the irrigation plant.

Selden is preparing to construct a fair ground composed of a race track, tennis and base ball grounds. Selden is alive and is billed to make one of the leading towns of Northwest Kansas.

Frank Hendricks and family are once more located on their homestead eight miles southwest of Hoxie. They have resided at Natoma, Osborne county, the past year.

Mr. and Mrs. W. R. Organ of Spring Brook were in town last Saturday. They get their mail at Grainfield, but when they want to visit a live town they come to Hoxie.

Frank Reynolds, who owns a fine quarter of land about eight miles south of town, arrived last week with his family from Plainville. They will reside in Sheridan county this year.

Lucerne Items

Mrs. Ellers is working for Mrs. Fogleman.

M. Stuart had a runaway and a smash up last week. Hard on hired hands.

John May has bought his old farm back and says this country is good enough for him.

No. 7

Guy Items

Willie Rawsen is working for Geo Pratt.

Frank Houseworth is plastering his new house.

Miss Mable Fogle is going to school at the Conard school house.

Reporter

Guy Flashes

We understand that Mr. Woods has rented five or six sections of Mr. Huxley and will put in a large crop of potatoes, alfalfa and horse-radish.

Mr. Charles Foster is now prepared to mend all kinds of household machinery such as organs, sewing-machines, clocks and apple parers, don't forget to give him a call.

Mr. George Pratt and wife and Mr. James Foster and wife took in the dance in Hoxie last Friday night. They returned home Monday evening and stopped in this city where they did considerable trading at Mr. Crick's, "The Universal Provider."

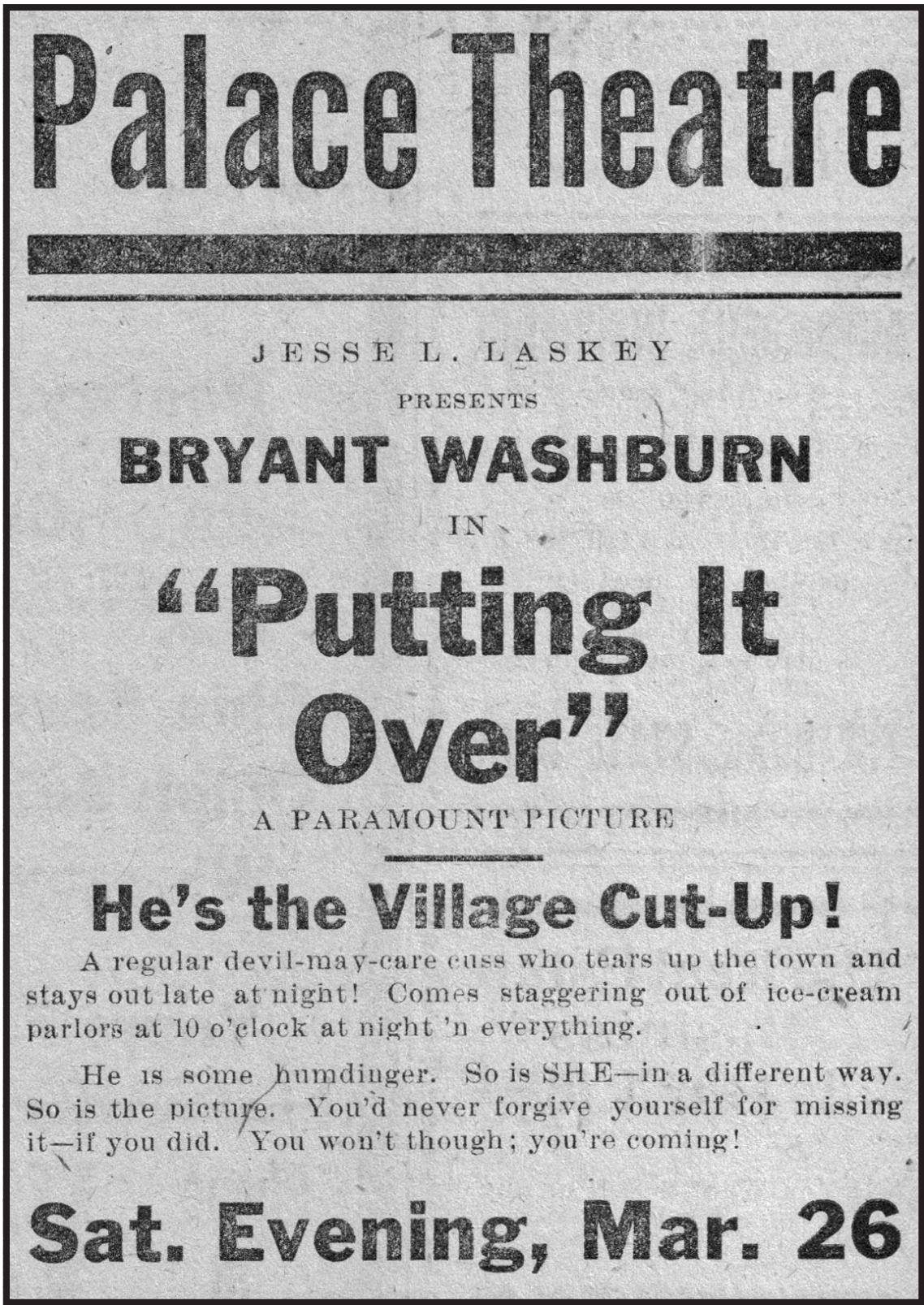
Pro Bono Publico

Selden Department

C. F. Monteith went to Kansas City with a car of hogs, Friday.

A daughter was born to Mr. and Mrs. Denperwolf last week.

A social dancing party was held in the brick building on last Friday evening. A very pleasant



From *The Hoxie Sentinel*, 1921. (Kenoxie Archives & Museum photo)

time is reported.

100 Years Ago March 24, 1921

Connie Taylor Hurt

Monday forenoon Connie Taylor had the misfortune to receive an ugly scalp wound while engaged in felling some trees in the timer. He attempted to release a tree which he had felled and had wedged on a limb of an adjoining tree, and as he hit the limb to dislodge the tree, it instantly released, and sent the axe back with a force that cut a deep gash in Mr. Taylor's head and rendered him unconscious for a time.

He is now getting along nicely and is probably lucky that it was no worse.

Local News

Miss Lena Baier and her mother, Mrs. E. Baier, were at Morland Saturday visiting friends.

County Superintendent McKinney is quite ill and has been unable to attend to the duties of her office for several days.

C. W. Popp, of Spring Brook township, was mingling with the numerous citizens who thronged our streets Saturday.

A number of Selden people were here Sunday to attend the funeral of their old-time neighbor and friend, the late T. F. Menefee.

C. H. Reed and wife, of Selden, passed through here last Friday on their way home from a month's visit at Kansas City and Hutchinson.

C. E. Montgomery took his auto hearse to Rexford Wednesday where it was used in the burial of one of the aged citizens over there.

Clarence Stewart, who spent several weeks on the Pacific Cost last winter, visiting and sightseeing, told us that while he and Mrs. Stewart had a good visit and a splendid time, yet they didn't see much country that they liked any better than good old Sheridan county.

Mr. and Mrs. George Schuricht are striving diligently to entertain a little lady who came to bless their home March 18. She seems well contended and has exercised splendid judgment in the selection of her home, and it is difficult to decide who is the most elated over her arrival, her proud parents or Grandpa and Grandma Schuricht.

Prairie Flower

By Uncle Josh

L. E. Taylor has a nice flag up, it reads, "Smallpox - Keep Out."

Martin Shoenfeldt is painting his barn which improves the looks of his farm.

Joe Kahler is getting to be a real Ford driver, he has killed one dog and hit one phone pole.

Northwest Prairie Dog

By Hooting Owl

Born, Sunday, March 13, to Mr. and Mrs. Earl Slaven, a bouncing baby boy.

Miss Vergie Pointer has been caring for the Jeff Peck family, who have had the scarlet fever.

Mrs. A. A. Warner who has been visiting relatives here returned to her home in eastern Colorado Saturday.

East Saline

By X. Y. Z.

S. I. McWilliams and family and E. C. McWilliams visited at Paul Corke's Sunday.

The Ladies' Aid of Old Mount Pleasant held their regular missionary meeting and election

of officers at the home of Mrs. Cass P. Breeden, Wednesday.

Mr. and Mrs. Bert Phelps and family spent Sunday at the home of Mr. Phelps's brother, George.

75 Years Ago March 28, 1946

An Exciting Bus Ride

Margaret Richardson, daughter of Mr. and Mrs. Harry Richardson, who attends Kansas State, in Manhattan, was going by bus from Manhattan to Omaha, Neb., to visit her sister, Nadine, who is a cadet nurse at the University Hospital, several weeks ago. About eleven miles south of Lincoln, Nebr., the bus stalled, the trouble being a leaky gas line. The bus driver went to telephone for another bus to come from Lincoln to get the passengers. A lady passenger screamed that the bus was on fire. Everyone cleared out as quickly as possible, and all were out when the fire caused an explosion of the bus. Their luggage was badly damaged as was the bus. Several fire departments were called. Margaret felt very fortunate, indeed, as did all the other passengers.

Morland News

Sunday dinner guests at the home of Mrs. Loof were Mr. and Mrs. Charles Critchfield and daughter, Betty.

Mr. and Mrs. I. L. Underhill from Manchester, Kans., arrived in Morland Sunday, where they will make their home.

A lady missionary from India gave a talk at the Methodist Church in Morland Sunday evening.

Selden Items

James Amack has returned home from the hospital at McCook where he has his appendix removed.

Leo J. Pankaskie sold his Leoville home this week and bought the Montanye property through the Fred Strohwig agency.

Mrs. E. L. Kiser left for her home in Craig, Colo., Friday. She visited at the Lyle Comstock home in Denver Saturday.

Lucerne World

Mrs. Walt Lewis who has been with her mother, Mrs. Mowry, here, left Friday to visit with her daughter and son-in-law, Mr. and Mrs. Earl Fairchild, at Ft. Collins, Colo. Mr. and Mrs. Fairchild had been to Eastern Kansas to see his mother who is very sick. Later Mrs. Fairchild died on Friday. We did not learn particulars of funeral.

Mr. and Mrs. Virgil Kemp and baby girl and Mrs. Lee Kemp visited at the Pete Kemper home Sunday. Also Miss Rita spent Sunday at her parent's home.

Midway Items

The Midway Unit met at the home of Mrs. Albert Popp March 21st. Roll call was answered with ten members present and three visitors, Mrs. Fred White, Mrs. J. G. May and Mrs. Roy Cox. After our regular business meeting, we worked on a comforter top made of woolen pieces brought by members. A delicious luncheon was served by the hostess. We adjourned to meet on April 4th with an afternoon meeting at the home of Ardith Adams.

Mrs. H. G. Stewart of Grainfield visited with Mrs. J. H. Clinesmith last Thursday.

Tasco Notes

Mrs. Jesse Jones and children spent Monday at Buzz Storer's.

Norma and Bobbie Simonton spent Tuesday at

their grandmother Simonton's while their parents went to Hays.

50 Years Ago March 25, 1971

Seven Hoxie High Speech Contestants Qualify for State

Seven members of the forensic squad of Hoxie High School qualified for state competition at the district speech and drama festival held at Colby Saturday.

The students who qualified with "excellent" rating (I) are the following:

Gary Hedge - original oratory; Janet Oelke, original oratory; Jim Neuenschwander, extemporaneous speaking; Cee Ann Koerperich, dramatic interpretation; Glenda Brown, dramatic interpretation; Geraldine Kruse, duet acting; Teresa Brewster, duet acting.

Fire Damages Gas Pumps at Co-op

A fire at the Hoxie Co-op Oil Co. on Monday morning about 9 o'clock, destroyed one gas pump and damaged another, according to the manager, Eldon Steinshouer.

Prompt, efficient action by the Hoxie Volunteer Fire department prevented more serious damage and there were no injuries, Steinshouer said.

Solomon Valley 4-H Club

The February 17th meeting of the Solomon Valley 4-H Club was called to order by the president at the 4-H building. Roll call was "your favorite winter pastime." We decided to change our meeting night from Wednesday to Monday night.

For program Howard gave a demonstration on how to veneer wood. Sheryl gave a project talk on sewing. LaRene gave a parliamentary talk on things to do for a purple seal. Myrna gave a quiz on music symbols. Douglas had a quiz on the States for other program. Herb and Ross led a relay for recreation.

Truebloods were hosts. We adjourned to meet on March 15.

Gary Hedge, Reporter.

McGraw News

Mr. and Mrs. Earl Hartzog were Wednesday evening visitors of Mr. and Mrs. Floyd Tice.

Mr. and Mrs. Henry Kaspar were Sunday evening visitors of Mr. and Mrs. George Launchbaugh and Carol Lee in honor of George's birthday anniversary.

Mr. and Mrs. Bob Bainter and Tammy were Saturday afternoon and supper guests of the Jim Bainters.

Mickey's Want Ads

We have some beautiful new colors of Samson luggage for the ladies: Wild Strawberry, Pink Champagne and Moonglow.

Clerk: "I'm sorry, Miss, but I can't issue a marriage license until you have a properly filled out form."

Girl: "Listen, Mister, if my boy friend don't care, what business is it of your?"

If you don't like Scotts we have Heritage House Dacthal #3 for crab grass control and weed and feed + for later use.

Seguin Items

St. Ann's Sodality had their March meeting Tuesday evening at the church basement. There were minor business items disposed of and for the evenings fellowship some of the ladies present cleaned the dining hall floors and the others had an enjoyable songfest upstairs. Nancy Koster, our church organist, was there to practice so they joined her practice session. Mrs. Vernon Rietcheck was the luckiest of the 15 ladies present and received the hostess gift from Mrs. Ted Reinert, Mrs. Joe Mannebach and Mrs. Margaret Stephens, the hostesses.

25 Years Ago March 21, 1996

Yard Waste Facility Now Open

The Sheridan County Yard Waste Recycling Facility will accept grass clippings, leaves and wood chips.

The new facility is located 4.5 miles south of Hoxie, just north of the weekend yard waste disposal. Dump sites are marked and people are requested to unload at the proper location and keep the material clean.

Rexford Lions Plan Soup Meal

The Rexford Lions Club is sponsoring a soup meal fundraiser on March 23 at the Rexford Community Hall. A free-will donation will be accepted to raise money to purchase a new refrigerator for the hall.

Selden

The Selden American Legion has been busy preparing for the 3rd Annual Antique Tractor & Car Show to be held on June 2. They recently finished building a set of train cars to be pulled behind a tractor.

On Wednesday, March 13 they test drove the train at the Selden Grade School giving rides to the kindergarten, first and second grades. Thanks to Orris Aumiller for pulling the train with his antique tractor and thanks to Darrell Bruggeman for all his work building the train.

Jennings-Allison

Bill and Carolyn Brock of Lindsburg, Kan. came Friday and spent the weekend with Bill and Rosa Brock. On Sunday, Carolyn and Rosa went to AnSelmo, Neb., where they attended a wedding shower for Marcia Lindly and Chris Brock. An April 13 wedding is being planned.

Mr. and Mrs. Bob White spent Monday night in Wichita with Mr. and Mrs. Carl Best and Travis.

Rexford

"Internet" is the buzz word of 1996 as schools and homes rush to gain access to the world's resources. There is both good and bad involved but students will be taught and counseled concerning how to determine the difference between the various types of information. The Rexford School is to be commended in gaining this modern type of education.

Margaret Lund hosted the Rexford Bridge Club at her home in Oberlin, Wednesday afternoon. Helen Karls of Selden was the guest. Prizes were won by Mrs. Lund, Margerette Edmundson and Berneda Zoberst.

Resurfacing Project Underway on I-70 in Thomas County

The Kansas Department of Transportation has started a resurfacing project on 7 miles of I-70 in Thomas County.

Project work consists of a mill and overlay in both the eastbound and westbound lanes starting near exit 45 at Levant and ending at exit 53 at Colby. Traffic will be reduced to one lane through the work zones with a lowered speed limit. Minor delays not exceeding five minutes should be expected.

KDOT anticipates work to be completed by mid-May, weather permitting.

Venture Corporation of Great Bend is the primary contractor for the \$4.2 million project. For more information, please contact KDOT area construction manager Kegan Hemel at 785-626-3258 or kegan.hemel@ks.gov.

HOXIE CITY-WIDE CLEAN-UP

Spring Clean-Up is a FREE service provided by the City of Hoxie.

Monday – Wednesday, March 29, 30 & 31

- City trucks will make a special trash pickup on these days.
 - All items MUST be out at the curb or by the alley.
- Please do not put items out more than 1 week in advance.

- All types of trash will be picked up *excluding tires*.
 - All appliances must have Freon removed.
- Yard waste will be picked up on your regular yard waste day and must be in a solid container.
 - Tree limbs must be cut no longer than 6 feet long.
 - Normal household trash will be picked up in the usual manner.

SPECIAL NOTE:

TRASH MUST BE SEPARATED, i.e., tree limbs from metals, etc. since they are disposed of in different locations at the landfill.
Mattresses and furniture must be separated from other trash.

HOUSEHOLD HAZARDOUS WASTE
(paint, motor oil, batteries, pesticides, poisons, caustic chemicals, etc.)
WILL ALSO be picked up at this time.

Please call the City Office at 785-675-3291 to schedule your pickup and for Handicap accommodations.

If you have any questions, contact the Public Works Dept. at 675-3119 and leave a message.

SPONSORED BY THE CITY OF HOXIE

President Biden's Immigration Policies Created a Crisis at the US Border

U.S. Senator Roger Marshall, M.D. penned an op-ed for the Topeka Capital Journal highlighting the failures of the Biden Administration when it comes to the southern border crisis.

Sen. Roger Marshall: President Biden's Immigration Policies Created a Crisis at the US Border

By: U.S. Senator Roger Marshall, M.D.

March 19, 2021
Gannett Kansas

I recently took my third trip to our southern border as a member of Congress, my first since being elected to the U.S. Senate. It was also my first visit since President Biden has been in office.

As a physician, I've done mission work all over the world and I know a humanitarian crisis when I see it. The situation at our southern border is a massive crisis. During a 30-mile helicopter tour in Texas, I saw more than 200 border crossers traveling by foot, car or raft as they ventured across the Rio Grande to take advantage of the lax immigration enforcement measures being deployed on our southern border.

This was just a fraction of what the state is seeing at this stretch of border on a daily basis.

The current administration attempts to blame this crisis on the previous administration, stating its predecessor's policies created a "pent-up demand." This dangerous deflection fails to acknowledge that the increased demand has come directly at the hands of President Biden.

Since being sworn in, he has implemented a number of policies and proposed several others that are now serving as an immense magnet for individuals in Mexico and Central American countries to attempt to enter the United States. He halted construction of the border wall by unlawfully freezing funding, ended the Remain in Mexico Program and has reaffirmed his commitment to grant blanket amnesty to at least 11 million illegal immigrants already residing in the country, to name a few.

With less than two months in office, President Biden's policies have created a three-pronged crisis on the southern border unlike anything we've ever seen.

First, it's a humanitarian crisis. The number of unaccompanied children being held in detention is unprecedented and the sheer volume of individuals arriving at our southern border is amongst the highest ever recorded. The number of children in Customs and Border Patrol custody has increased by more than 400%, up to more than 13,000. Holding facilities for minors in the Rio Grande Valley region of Texas where I toured are at 363% capacity.

In February, the U.S. Border Patrol arrested nearly 100,441 individuals, the third-highest month in more than a decade and 45% higher than February during the 2019 border crisis.

Second, it's a health care crisis. The United States is emerging from a year spent battling a deadly pandemic that resulted in the death of more than half a million Americans. Migrants arriving at the southern border are testing positive for the coronavirus at between three and 10 times the rate of American citizens.

Third, it's a national security crisis. By exploiting the surge of individuals making the journey north, Mexican cartels are making money by assisting many of them across the border. The Texas Department of Public Safety told me that Mexican Cartels are making more money trafficking humans than they do drugs.

A p p r e h e n d i n g unaccompanied minors and family units is also taking away resources from Border Patrol so it's unable to focus on drug seizures. In February, drug seizures increased 50% from January, including a 40% increase in methamphetamine and a 48% increase in heroin.

The Biden administration policies of an open border and mass amnesty have created a humanitarian crisis, a health care crisis and a national security crisis.

While we try to show compassion to everyone, keeping our border secure must be a top priority. Without secure borders, we cannot ensure our nation's safety, period.

Roger Marshall is a U.S. Senator from Kansas

Congressional Art Competition

U.S. Representative Jake LaTurner announces information for annual Congressional Art Competition:

Each spring, a nation-wide high school arts competition is sponsored by the Members of the U.S. House of Representatives. The Artistic Discovery Contest is an opportunity to recognize and encourage the artistic talent in the nation, as well as in our Congressional District. The deadline to submit artwork is April 16, 2021.

The Artistic Discovery Contest is open to all high school students in our district. The winning artwork of our district's competition will be displayed for one year in the U.S. Capitol. The exhibit in Washington will include the winning artwork from all participating districts from around the country. The winning artwork is also featured on the Congressional Art Competition page.

The following is a summary of the Congressional Art Competition rules:

Artwork entered in the contest may be up to 28 inches by 28 inches, may be up to 4 inches in depth, and not weigh more than 15 pounds. If your artwork is selected as the winning piece, it must arrive framed and must still measure no larger than the above maximum dimensions.

- Paintings - including oil, acrylics, and watercolor
- Drawings - including pastels, colored pencil, pencil, charcoal, ink, and markers (It is recommended that charcoal and pastel drawings be fixed)
- Collages - must be two dimensional
- Prints - including lithographs, silkscreen, and block prints
- Mixed Media - use of more than two mediums such as pencil, ink, watercolor, etc.
- Computer-generated art
- Photography

All entries must be original in concept, design and execution and may not violate any U.S. copyright laws. Any entry that has been copied from an existing photo or image (including a painting, graphic, or advertisement) that was created by someone other than the student is a violation of the competition rules and will not be accepted. Work entered must be in the original medium (that is, not a scanned reproduction of a painting or drawing).


Go to <http://bit.ly/3cVa6Oh> to fill out the competition form. Also, please review the submission process and rules at <http://bit.ly/2OXoxGw>.

If you have any questions or concerns about the submission process, please contact Ethan Clark at 202-225-6601, or ethan.clark@mail.house.gov

KENOXIE ARCHIVES & MUSEUM
(a non-profit 501(c)3 company)
Preserving the written history of Sheridan County and surrounding areas.
PO Box 78 - 716 Main
Hoxie, KS
785-677-3994
archives@sheridansentinel.com

Bernard R. Dickman
Certified Public Accountant
110 South Adams
Grinnell, KS 67738
Directly south of Grinnell Locker
Can Handle All of Your Accounting and Tax Needs
785-824-3865
Call for an appointment
Check out website for Full Services
website: www.bdickmancpa.com
E-mail address: barney@bdickmancpa.com

NEW SERVICE OFFERED AT NEW FRONTIERS HEALTH SERVICES
Sharonda Miller, APRN/NP is now a BioTE® certified provider! BioTE® is a hormone optimization therapy that takes a complete approach to healthier aging through patient-specific bioidentical hormone replacement therapy. BioTE® offers patients the possibility to experience increased energy and muscle strength, greater ability to lose weight, reduced mood swings, better sleep at night, mental clarity and increased libido. Contact Sharonda at New Frontiers to get started with a simple test.



New Frontiers Health Services
212 Maple Avenue
Oakley, KS 67748
785-672-3261


TAX PREPARATION
HIRSCH LAW OFFICE

- State & Federal Tax Returns
- IRS Forms
- Extensions
- Electronic Filing
- Individual / Business Taxes
- Credits & Deductions
- Dependents
- Home Ownership
- Investment Income
- Education

Don't Delay - Call Today!
**Steven W. Hirsch**
821 Main Street
Hoxie, KS 67740
785-675-3762

Tuttle Taxes
320 Main Street, Quinter, KS 67752
Business: 785-754-3468
Cell: 785-673-3086
Open: Monday - Friday
9 a.m. - 5 p.m.
Saturdays by appointment.
Federal, State, W-2s, 1099s and Quarterly Taxes.
All 2020 Forms available for those of you that do your own forms.
Drop-offs, Walk-ins, and Main-ins are all Welcome at an affordable price.
Tax Preparers:
Mary Tuttle & Connie Albin


The filing deadline for income and payroll taxes is just around the corner. **Mapes & Miller LLP** will work hard to minimize your tax liability.



- Individual, corporate, partnership and fiduciary income tax preparation
- Computerized monthly bookkeeping
- Consulting for QuickBooks
- Payroll

Almost anyone can enter numbers in a computer, but we strive to be your **trusted business advisor**. Let us put our **farm and business** experience to work for you.

Don E. Tilton, CPA **Stephanie M. Heier, CPA**
Lorie Heier, Office Manager/Payroll
230 Main, Quinter, KS 67752 • 1-877-754-2111
www.mmcpas.net



Mapes & Miller LLP
Certified Public Accountants & Business Advisors

Crop Talk Series Held Virtually

By **Keith VanSki**, Twin Creeks Extension, Agronomy & Natural Resources Agent

This year our “Crop Talk” series was held virtually. This series is focused on agronomic topics targeted for northwest and north central Kansas. Topics ranged from soil fertility, weed management, insect management, and dryland corn dynamics. The topics this past season included: Soil Fertility Questions, Weed Management and that Pesky Palmer Amaranth, Grain Sorghum Weed Control: Start Clean, Stay Clean, Sorghum Insects: Aphids, Headworms and Chinch Bugs, Alfalfa Management and Weevil Update and Dryland Corn Dynamics. The videos and speaker handouts can be found on the K-State Northwest Area extension office events page at: http://www.northwest.k-state.edu/events/crop-talk-series/index.html#Recordings_and_Handouts The videos are also available on the K-State Agronomy YouTube channel at: <https://www.youtube.com/watch?v=lxjm2bm1jH8&list=PLZuS-gs49LuzJrBeIgoIPIgzejublW5x2> Please contact any local KSRE extension office in north central or northwest Kansas for any questions.

Spring Oats for Forage Production

Oat pasture should be treated the same as winter wheat pasture in terms of stocking rates and time to initiate grazing. Since grain production is not practical or recommended under grazing, producers should treat oat pasture as a graze-out program or remove it when ready for the next crop. Oats are easily controlled by a variety of herbicides, such as glyphosate and atrazine. The length of effective grazing is a function of stocking rate and weather. Properly stored, oat hay also provides a high-quality feed source. The average yield across 20 varieties at the Experiment Field is four tons per acre. Hay yield was determined at late milk/early dough stage, with an average moisture content of 60%. However, to maximize grazing opportunities, it is important to supply adequate N. For hay late boot to early heading is a good compromise of quality of feed versus quantity harvested. At dough stage, hay should have a TDN of 56% and 10% protein on a dry basis. A nitrate test is recommended. Prussic acid levels should not be a concern.

Silage is another option for spring oats. Oats should be harvested for silage from late milk through early dough stages. Expect silage with a TDN of approximately 60% and 9% protein on a dry weight basis. Before planting oats, check the herbicide history of the desired field. Oats are especially sensitive to triazine herbicides. The optimal planting date depends on location. In northwest Kansas, the optimal date is from the first week of March through the end of March. However, adequate pasture is practical after the optimum planting date. To maximize pasture production potential, it is necessary to plant as early as possible. A seeding rate of two bushels per acre is recommended. When grown for hay or silage, fertility recommendations are similar to those for grain production: 75 to 125 lbs. N per acre. When planted for grazing, an additional 30 lbs. N per acre is recommended. Under adequate soil moisture, a seeding depth of ½-1” is good. Oats can be planted at depths greater than one inch under dry conditions; however, oat seedlings are less vigorous than wheat and can experience difficulties emerging at deeper planting depths, especially after crusting rains.

For more information, see K-State publication MF-1072, *Small Grain Cereals for Forage* at: <http://www.ksre.ksu.edu/bookstore/pubs/MF1072.pdf>.

Kansas Crop Progress and Condition

For the week ending March 21, 2021, there were 2.7 days suitable for fieldwork, according to the USDA's National Agricultural Statistics Service.

Topsoil moisture supplies rated 4% very short, 13% short, 68% adequate, and 15% surplus. Subsoil moisture supplies rated 9% very short, 20% short, 64% adequate, and 7% surplus.

Field Crops Report: Winter wheat condition rated 5% very poor, 16% poor, 34% fair, 40% good, and 5% excellent.

Kansas Cattle on Feed Up 4 Per Cent

Kansas feedlots, with capacities of 1,000 or more head, contained 2.47 million cattle on feed on March 1, according to the USDA's National Agricultural Statistics Service. This inventory was up 4% from last year.

Placements during February totaled 375,000 head, down 4% from 2020.

Fed cattle marketings for the month of February totaled 415,000 head, up 4% from last year.

Other disappearance during February totaled 10,000 head, unchanged from last year.

Kansas Milk Production

Milk production in Kansas during February 2021 totaled 324 million pounds, up 1% from February 2020, according to the USDA's National Agricultural Statistics Service. The average number of milk cows was 174,000 head, 5,000 head more than February 2020. Milk production per cow averaged 1,860 pounds.

Kansas Honey Production

Honey production in 2020 from Kansas producers with five or more colonies totaled 496,000 pounds, down 10% from 2019, according to the USDA's National Agricultural Statistics Service.

There were 8,000 honey producing colonies in Kansas during 2020, up 14% from 2019. Average yield was 62 pounds per colony, down 17 pounds from 2019. Producer stocks were 164,000 pounds on December 15, 2020 down from 171,000 pounds a year earlier.

Prices for the 2020 crop averaged \$2.93 per pound, up from \$2.35 per pound in 2019. Prices were based on retail sales by producers and sales to private processors and cooperatives. Total value of honey produced in 2020 was \$1.45 million, up 12% from 2019.

Wheat Scoop: Kansas Farm Food Connection Celebrates National Ag Day

Each American farmer feeds more than 165 people — an incredible feat of continuous improvement — but consumers want to know more about the facts and folks behind this food.

National Ag Day, observed each March, is a nationwide effort to answer these questions and recognize the invaluable contributions of farmers.

To help celebrate National Ag Day on March 23, Kansas Wheat joined nine other Kansas agricultural organizations this week to pack 250 crates full of tasty food, fun activities, and handy kitchen supplies for Kansas families.

“We worked with the Kansas Farm Food Connection to put together a special crate of amazing food, activities and more to help Kansas families celebrate National Ag Day,” said Marsha Boswell, Kansas Wheat vice president of communications. “We hand-selected a variety of goodies from not only the wheat industry but also pork, beef, dairy, cotton, grain sorghum, soybeans, sunflowers, Nutrients for Life and Kansas Farm Bureau. There's plenty of love from farmers and fun for the whole family packed inside each box.”

Building on the success of last summer's Wheat State Crate, Kansas Wheat worked with the other members of the Kansas Farm Food Connection to put together a box of educational materials and hands-on

activities that are now on their way to Kansas families. Kansas Wheat provided bags of Hudson Cream Flour and a bowl scraper, while other groups provided recipes, food samples, STEM activities, kitchen supplies and other fun promotional items.

To sign up for the crate, interested people had to watch videos related to Kansas agriculture and answer questions. Tyler Millershaski, a wheat farmer from Lakin and vice president of the Kansas Association of Wheat Growers, was featured on the site. Watch his farming story at <https://vimeo.com/418597996>.

Those who missed out on the crate still received videos and materials via e-mail so that they could still learn and enjoy Kansas agriculture. All were invited to “cook along,” making pizza using homemade pizza dough made with Hudson Cream Flour, with Kansas ranchers Arturo and Wrenn Pacheco and their kids via video. (<https://youtu.be/SNmZWKIxCws>) The Pacheco family also shared their favorite Kansas wheat facts, including that Kansas grows enough wheat each year to make 38 billion loaves of bread. That's

enough to feed everyone in the world for two weeks.

The Kansas Farm Food Connection is a joint effort of 10 Kansas ag organizations to serve as a consumer resource for anything and everything related to food and agriculture. Through promotional activities and a shared website — <https://kansasfarmfoodconnection.org/> — the groups provide information on how agriculture puts food on the table, fuel in vehicles and provides fiber for clothes. The site also features stories from Kansas farmers about how and why they farm the way they do.

“National Ag Day is about celebrating how agriculture contributes to our lives each and every day,” Boswell said. “We are proud to work together through the Kansas Farm Food Connection to share the story of how Kansas farmers play an essential role in providing safe, abundant and affordable products.”

Learn more about the Kansas Farm Food Connection at <https://kansasfarmfoodconnection.org>.

www.fordearsofcolby.com

Tubbs & Sons

810 South Range Colby, KS Ford Sales Inc.

1-800-369-3673 785-460-6746

 <p>2016 Lincoln MKT AWD Ceramic Pearl w/ Adobe Leather 64K Miles</p> <p>01777 \$21,850</p>	 <p>2017 Ford Edge SEL AWD White Platinum w/Black Leather 42K Miles</p> <p>06273 \$20,850</p>
 <p>2015 Chevrolet Captiva 4DR SUV Silver w/Black Cloth 44K Miles</p> <p>14776 \$11,850</p>	 <p>2017 Lincoln MKZ Reserve Silver w/Black Leather 35K Miles</p> <p>19230 \$25,850</p>
 <p>2016 Dodge Ram 1500 Laramie Crew Cab 4X4 White w/Tan Leather 95K Miles</p> <p>25287 \$32,850</p>	 <p>2019 Ford F150 Supercrew XLT 4X4 Ingot Silver w/Medium Gray Cloth 16K Miles</p> <p>26478 \$39,850</p>
 <p>2015 Jeep Renegade Latitude 4X4 Silver w/Black Cloth 62K Miles</p> <p>28340 \$14,500</p>	 <p>2018 Ford F150 XLT Supercab 4X4 Magnetic w/Med Gray Cloth 18K Miles</p> <p>83064 \$35,850</p>

Monday-Friday 8 a.m. - 6 p.m. Saturday 8 a.m. - 4 p.m.

Hoxie Veterinary Service, PA
1367 N Hwy 23, Hoxie
785-675-3378
Derek Priddy, DVM
Brandi Taul, DVM
Gina VanLoenen, DVM

Monday-Friday 8am-5pm
Saturday 8am-noon
24-hr emergency

With our competitive rates, now is the time to refinance your farm real estate!

4% FARM LOANS are back!

Visit us at our Local Hoxie Outpost

First Insurance Agency
700 Main Street, Hoxie
Every Tuesday
or By Appointment 1-3pm

Wade Gantz: 785-798-5925
Toll Free: 800-950-3522
Wade.Gantz@HighPlainsFarmCredit.com



High Plains Farm Credit


Real Estate Loans - Leasing
“Proudly Serving Sheridan County”

REACH

the Entire State with your message at an

85%

savings over individual newspaper placement.



Kansas Press Association
Call 785-271-5304
Or your Local Paper Today!

(First published in The Sheridan Sentinel March 18, 2021)

1320 Research Park Drive
Manhattan, KS 66502
785-564-6700
www.agriculture.ks.gov

Mike Beam, Interim Secretary



900 SW Jackson, Room 456
Topeka, KS 66612
785-296-3556

Laura Kelly, Governor

GENERAL NOTICE TO CONTROL NOXIOUS WEEDS

The Kansas Noxious Weed Law K.S.A. 2-1314 et seq requires all persons who own or supervise land in Kansas to control and eradicate all weeds declared noxious by legislative action. The weeds declared noxious are: Field Bindweed, Musk Thistle, Johnsongrass, Bur ragweed, Canada thistle, Sericea Lespedeza, Leafy Spurge, Hoary Cress, Quackgrass, Russian Knapweed, Kudzu and Pignut. Notice is hereby given pursuant to the Kansas Noxious Weed Law to every person who owns or supervises land in Sheridan County that noxious weeds growing or found on such land shall be controlled and eradicated. Control is defined as preventing the production of viable seed and the vegetative spread of the plant.

Failure to observe this notice may result in the County:

1. Serving a legal notice requiring control of the noxious weeds within a minimum of five days. Failure to control the noxious weeds within the time period allowed may result in the county treating the noxious weeds at the landowner's expense and placing a lien on the property if the bill is not paid within 30 days or,
2. Filing criminal charges for non-compliance. Conviction for non-compliance may result in a fine of \$100 per day of non-compliance with a maximum fine of \$1,500.

The public is also hereby notified that it is a violation of the Kansas Noxious Weed Law to barter, sell or give away infested nursery stock or livestock feed unless the feed is fed on the farm where grown or sold to a commercial processor that will destroy the viability of the noxious weed seed. Custom harvesting machines must be labeled with a label provided by the Kansas Department of Agriculture and must be free of all weed seed and litter when entering the State and when leaving a field infested with noxious weeds.

Additional information may be obtained from the Sheridan County Noxious Weed Department or by contacting the Kansas Department of Agriculture, 1320 Research Park Drive, Manhattan, KS 66502.

(Last published in The Sheridan Sentinel April 1, 2021)

(First published in The Sheridan Sentinel March 25, 2021)

IN THE DISTRICT COURT OF SHERIDAN COUNTY, KANSAS
PROBATE DIVISION

In the Matter of the Estate of
ELIZABETH VERONICA YOUNGER
aka ELIZABETH YOUNGER, Deceased.

Case No.: 2021-PR-13

NOTICE OF HEARING AND NOTICE TO CREDITORS
THE STATE OF KANSAS TO ALL PERSONS CONCERNED:

You are hereby notified that a petition dated March 202021, has been filed in this court by Steven W. Hirsch, attorney for Wayne Lee Younger, as the administrator of the estate of Elizabeth Younger, deceased, praying for administration of said estate and for the appointment of Wayne Younger, administrator of the estate.

You are further advised that the petitioner in this matter has requested administration pursuant to the Kansas Simplified Estates Act, and if such request is granted the court may not supervise administration of the estate and no further notice of any action of the administrator or other proceedings in the estate will be given except for notice of final settlement of the decedent's estate. Should written objections to simplified administration be filed with the court, the court may order supervised administration to ensue.

All creditors are notified to exhibit their demands against the estate within four months from the date of the first publication of this notice as provided by law, and if their demands are not thus exhibited they shall be forever barred.

/s/ Wayne Lee Younger
Wayne Lee Younger, Petitioner

/s/ Steven W. Hirsch
Steven W. Hirsch #12789
HIRSCH LAW OFFICE
821 Main, Hoxie, Kansas 67740
124 So Penn, PO Box 296, Oberlin, Kansas 67749
PH: 785-475-2296
Attorney for Petitioner

(Last published in The Sheridan Sentinel April 8, 2021)

(First published in The Sheridan Sentinel March 25, 2021)

IN THE DISTRICT COURT OF SHERIDAN COUNTY, KANSAS
PROBATE DIVISION

In the Matter of the Estate of
RAYMOND L. MINIUM, Deceased.

No. 2021-PR-000006

NOTICE OF HEARING
AND NOTICE TO CREDITORS

The State Of Kansas To All Persons Concerned:

You are hereby notified that a Petition for Probate of Will and Issuance of Letters Testamentary Under Simplified Estates Act was filed in this Court on March 18, 2021 by Lisa J. Minium, the Executor named in the Last Will of the decedent, praying that the instrument be admitted to probate, and for the appointment of Lisa J. Minium to serve as the Executor of the Estate of Raymond L. Minium, without bond.

You are further advised that the petitioner in this matter has requested administration pursuant to the Kansas Simplified Estates Act, and if such request is granted, the Court may not supervise administration of the estate and no further notice of any action of the Executor or other proceedings in the administration will be given except for notice of final settlement of the decedent's estate. Should written objections to a simplified administration be filed with the Court, the Court may order supervised administration to ensue.

You are hereby required to file your written defenses to the admission of the decedent's Last Will to Probate on or before Tuesday, the 20th day of April, 2021, at 10:00 o'clock a.m. in this Court in the City of Hoxie, in Sheridan County, Kansas, at which time and place the cause will be heard. Should you fail, judgment and decree will be entered in due course upon the Petition.

All creditors are notified to exhibit their demands against the estate within four months from the date of the first publication of this notice as provided by law, and if their demands are not thus exhibited, they shall be forever barred.

Lisa J. Minium, Petitioner

Submitted by:
SEIBEL LAW OFFICE, LLC
STACEY L.J. SEIBEL (KS# 17293)
1805 E. 27th Street, Hays, KS 67601
Telephone: (785) 625-3997
Attorney for the Petitioner

(Last published in The Sheridan Sentinel April 8, 2021)



SALE!
2019-2020
Prices

Cemetery Monuments & Markers
Call Don Kennedy
(785) 672-3671 for more information.

Kennedy-Koster Funeral Home PO Box 221, Oakley, KS 67748



Emery Hart

October 21, 1943 ~ March 19, 2021

Emery LaVerne Hart, 77, of Grinnell, died Friday, March 19, 2021, at Hays Medical Center. He was born October 21, 1943, in Solomon, KS, to Solomon and Minnie (Seward) Hart. Emery graduated from Hoxie High School in 1962 and attended Fort Hays State University, where he lettered in football and wrestling, graduating in 1967. On August 8, 1965, Emery married Judy Blank and to this union 2 sons were born.

Emery spent his life as an educator and coach. He taught first, at Webster School, then at Stockton Grade School for 5 years. There he coached junior high football and wrestling and was the Stockton High School wrestling coach. The family then moved to Grinnell, where he worked at the Angelus Grade School for a year. He transitioned in to Grinnell High School, where he served 2 years as principal and he completed his Master's Degree in School Administration from Fort Hays State in 1974. The next move was to Ellis, KS, where he was the grade school and middle school principal and also worked on completing his degree to become a superintendent. Once he received his degree, they moved back to Grinnell, where he was the superintendent and principal until 1990. Emery was principal at Oakley High School for 3 years and then spent the remainder of his career as principal and Superintendent of Schools of Natoma, Morland, Utica, and Jennings. He came out of retirement to serve as interim administrator at Brewster for one semester.

Emery was a member of the Grinnell United Methodist Church and the Cow Paddy Golf Course. He served on the Gove County Hospital Board, the Grinnell School Board, and Grinnell Township Board. In his spare time, he enjoyed hunting, fishing, golfing and mowing. He was a avid supporter of any sport his children and grandchildren participated in, always the old coach. He was a huge fan of the Kansas City Chiefs, Royals, and Nebraska Husker Football teams.

Emery was preceded in death by his parents; sisters, Joan (J. Harold) Sonntag and infant Elsie Mae Hart, and in-laws, Gail and Jeanne Blank.

He's survived by his wife Judy, of Grinnell; children, Ted (Amanda) Hart, of Grinnell and Doyle Hart of Lawrence; grandchildren, Austin Hart, of Grinnell, Zach Hart, of Victoria, Kyla Smith, of Grinnell and Devynn (Jessica) Hageman, of Broomfield, CO; great granddaughter, Iva Hageman; sister Flossie (Ed) Harman, of Russell; sisters-in-law, Monna Blank, of Austin, TX and Eva Cecil, of New Cumberland, WV; nieces and nephews, Cindy (Kenney) Ramsey, Hoisington, KS, Doug (Marval) Blank, Valley Center, KS, Aaron (Janelle) Blank, Austin, TX, Caleb (Lisa) Blank, Mansfield, TX., Russell Blank of Kentucky, and Robert Blank of North Carolina.

A Memorial Service will take place at 2:00 p.m. Saturday, March 27, 2021, at the Grinnell Middle School Gym, with inurnment in the Grinnell Township Cemetery. Memorials are suggested to the Grinnell Angelus Area Heritage Center and may be sent in care of Baalmann Mortuary, PO Box 204, Oakley, KS 67748. For information or condolences visit www.baalmannmortuary.com.

Steven Scott

May 12, 1948 ~ February 25, 2021

Steven Kelly Scott was born May 12, 1948 in Studley, Kansas, the eighth of 16 children born to Leroy W. and Mary (Irwin) Scott. He passed away February 25, 2021 at the VA health complex in Prescott, Arizona, at the age of 72.

He started first grade in Studley and later attended Hill City Grade School, Lucerne Country School and Sheridan Community High School in Hoxie, graduating in 1965. He wrestled, taking second in State his senior year. After attending Colby Community College, Steve was drafted into the United States Army and served in Vietnam. As with many war veterans, this experience stayed with him his whole life.

After being honorably discharged from the Army, Steve moved to Arizona. He worked as a tour guide in the Grand Canyon area, both driving a bus and taking tours to the bottom of the canyon with the mule train. He also worked as a carpenter, plumber, air conditioner tech and at Papillion Helicopters. In 1984, Steve met his love, Martha Manygoats and they made their home in the Tusayan/Grand Canyon area.

Steve played guitar and sang with his family, friends and neighbors. He and his neighbors formed a band, the Red Butte Ramblers. Martha, music, friends and family were all very special to him. Steve's kindheartedness, amiability, and ability to spin a yarn endeared him to everyone who knew him.

Steve was preceded in death by his parents, sister Dixie Schmeier, brothers Danny, Victor, Bob and Pete Scott. He is survived by his wife Martha, siblings Tyrone, Mary Ann, Art (Cheryl), Bill, Diana, Carolyn, Mike, Joan, Carl, and John. He's also survived by many nieces and nephews who had a big soft spot for their Uncle Steve.

The Scott family appreciates Steve's other families - Martha's family, his Army buddies and the many close friends and neighbors in northern Arizona with whom he shared love and support for years.

Services will be held this summer or early fall with inurnment at Lucerne Cemetery, rural Sheridan County, Kansas.

Don Mense

April 30, 1938 ~ March 15, 2021



Donald B. Mense, Hoxie, KS, 82 passed away on Monday March 15, 2021, at KU Medical Center, Kansas City KS. He was born April 30, 1938, in Grinnell KS to Ben and Hilda (Ostmeyer) Mense, the oldest of four children.

Don graduated from Grinnell High School in 1955 and went on to attend Benedictine College in Atchison KS. While home, Don met Florence Zerr at a dance, and it was love at first

sight for Don. He enlisted in the US Army and spent two years serving his country while Flo attended nursing school. He returned home to the farm, and married Flo, the love of his life, on November 26, 1960. They were blessed with 60 years of marriage.

The couple began their married life together in Denver, but quickly moved back to Grinnell so that Don could follow his passion for farming. They later moved to Hoxie where Don began his banking career at the Hoxie State Bank. Don served over 50 years at the bank, 30 of those as the bank president. Although he enjoyed the many relationships he built with his bank customers and colleagues, he never lost his passion for farming and his love of the land. He continued to farm in his spare time and throughout his retirement years.

Don and Flo were blessed with three children. Flo was his world, and he would do anything for her. They celebrated their 60th wedding anniversary this past November. His love for his family and friends was evident in all he did.

Don's faith was his foundation, and he passed his love of the Lord on to his children and grandchildren. He always took time to pray and attend mass. Don lived his life with prayer and spent many hours saying the rosary while working the fields.

Don loved to play golf. He spent as much time as he could with family and friends on the golf course. He always looked forward to his golf nights and playing any tournament he could. Don was always quick with a joke and always had a grin on his face. He loved watching his grandchildren participate in all their activities. The couple also loved to travel and visited many different cities and countries.

Don was an active member of the Hoxie community. He was a member of the St. Frances Cabrini Catholic Church, Knights of Columbus, Rotary Club, and Elks Club. He also served on many advisory boards throughout the years and enjoyed giving back to his community.

Don is survived by his wife, Flo of Hoxie KS, his children, Michael (Cheri) Mense of Hoxie, Maurica (Michael) Gilliland of Spring Hill, and Malia Mense of Overland Park; brothers Tom (Karen) Mense, Grinnell, and Steve (Vickie) Mense, Asbury, MO; grandchildren, Allison (Matt) Ebert, Ben (Tori) Mense, Mackenzie (Heath) Best, Nick (Ashley) Gilliland, Layne Gilliland (Tanner Engweiler), Abriel Jarrett, and Ryder Jarrett; great-grandchildren Henry and Luke Ebert, and Felix Gilliland.

Don is preceded in death by his parents, Ben and Hilda Mense; sister, Micki Sweeney, and great-grandson, Grady Best.

A Mass of Christian Burial was held Saturday, March 20, 2021, 10:00 A.M. at St. Frances Cabrini Catholic Church, Hoxie. Visitation was Friday, March 19, 2021 at Mickey-Leopold Funeral Home and at the St. Frances Cabrini Catholic Church. Vigil Service and Rosary followed the visitation at the church. Memorials are suggested to Sheridan County Community Foundation, St. Frances Cabrini Catholic Church, and The Vascular Health Foundation. Memorials may be sent in care of Mickey-Leopold Funeral Home, PO Box 987, Hoxie, Kansas 67740.

Sheriff's Report

Calls by Service Type

02/01/2021 to 02/28/2021

Traffic Stop:	62
Abandoned Vehicle:	2
Motor Vehicle Accident - Property Damage:	1
Motor Vehicle Accident w/Deer:	1
ANIMAL CALL:	1
Assist:	5
Attempt to Locate:	2
Control Burn:	2
Business Check:	1
Municipal or District Court:	2
Civil Process of Documents-Served:	10
Disabled Vehicle:	12
Dog At Large:	7
Domestic Disturbance:	1
Drug Offenses:	1
Driving Under the Influence:	2
Ambulance Run:	3
Equipment Repair:	2
General Escort:	2
Fingerprints Taken (non criminal):	4
Fire:	2
Fish/Boat License Checks:	1
Fraud:	3
Gas or Hazard Fumes:	1
Creating a Hazard:	2
Incident:	1
JAIL - Cleaning/Recreation:	2
Jail Meals:	14
Suspicious letter/package:	1
Property Seizure:	1
Contact w/Public :	41
Reckless Driver:	3
Phone/Mail Scam:	2
Suicidal Subject:	2
Suspicious Activity:	2
Suspicious Vehicle:	2
Traffic Control:	2
Training:	1
Truancy:	1
Vin Inspections:	14
Visitation:	1
Welfare Check:	3
Total:	225

1	2	3	4	5	6	7	8	9	10	11	12	13	14	15	16	17	18	19	
20					21							22							
23				24								25							
26						27				28	29				30				
				31		32			33	34				35					
36	37	38	39				40	41			42								
43							44				45			46			47	48	49
50						51					52		53	54			55		
56					57					58						59			
				60					61	62					63				
64	65	66	67					68						69					
70						71	72	73				74	75	76					
77					78						79					80	81	82	83
84				85					86	87					88				
89			90				91		92					93					
			94		95	96			97				98						
99	100	101						102				103							
104					105					106	107			108		109	110	111	112
113				114				115	116	117			118						
119								120							121				
122								123							124				

WORD AD RATES
\$4.25 - first 20 words
\$0.15 - per word after
Deadline Noon Tuesday.

FOR SALE
FOR SALE: Corn-Fed Beef Quarters & Halves, Hamburger, Steaks.
Processed at American Butcher's. Will deliver. Call Jonny Jones 785-675-8920.
---21/TFN---

HELP WANTED
HELP WANTED: USD #292 Wheatland School accepting applications for full time **Head of Maintenance** for district facilities: Wheatland High School, Wheatland Elementary School, all school owned property, bus/vehicle fleet. KHDE water and wastewater certificate required upon employment. Starting date and wages negotiable. Bus driving possible. Job description and application available at USD #292 District Office 785-673-4213 or Wheatland High School, 2920 K 23, Grainfield, KS 67737.
---25/26---

HELP WANTED: Hi-Plains Coop is looking for a **grain elevator worker**. Full time position with benefit package. Apply in person at Hi-Plains Selden location. 785-386-4291 EEO

HELP WANTED: We are growing! Sheridan County Public Health is accepting applications for full-time

DISPLAY AD RATES
\$5.90 per column inch
Deadline Noon Tuesday.

receptionist, Monday-Friday, 8:00-4:30. Applicant must be self-driven, organized, able to multitask, and express excellent customer service skills. Experience with billing and insurance helpful, but willing to train the right candidate. We offer a great work environment: Sheridan County offers competitive wages, retirement, and health insurance. For information and an application, contact Renee Wagoner, Public Health RN/Administrator, 785-675-2101. Applications accepted until position is filled. EOE
---23/TFN---

HELP WANTED: The Sheridan County Road & Bridge Department is accepting applications for an equipment operator. Experience and CDL preferred. This is a full-time position. Applications may be picked up at the Road & Bridge Office, Monday through Friday from 8:00 am - 4:30 pm. Sheridan County offers competitive wages, retirement, and health insurance. For questions and to request an application by mail, contact Joe Herskowitz at 785-675-3621. Applications will be accepted until the position is filled. EOE
---15/TFN---

HELP WANTED: Hoxie Feedyard & PSI are always interested in visiting with good people about a good job. We offer competitive pay and

great benefits. Please call Scott Foote 785-386-4519.

HELP WANTED: The Sheridan Sentinel & Sentinel Graphics & Design is looking for **Staff Reporters and Media Consultants** (social media, advertising, graphic design, custom graphics printing, etc.). Set your own hours - work around your family schedule! Call 785-675-3321, email advertising@sheridansentinel.com, or drop by *The Sentinel* office: 716 Main Street, Hoxie.
---41/TFN---

SERVICES
SERVICES: Stop by **Hoxie Implement** for your factory direct prices on heavy-duty commercial batteries; Baldwin filters for cars, trucks, tractors, combines, etc.
---40/TFN---

FARM CREDIT OF WESTERN KANSAS
Financing ag. for generations.
ACCOUNTANT POSITION
Farm Credit is accepting applications for a full time accountant position. Qualified applicants should have proficient computer skills. Prefer that the applicant has completed college level accounting courses or have sufficient job related accounting experience. Experience in electronic banking, and accounts payable would be beneficial. Excellent benefit package, including health, dental and life insurance, disability, 401K, vacation and sick leave. Applications may be obtained online at fcwk.com/Employment and returned with resume to chris.halbleib@fcwk.com or mailed to 1190 South Range, PO Box 667, Colby KS 67701. Interviews will be scheduled for qualified applicants.
Applications accepted until position is filled. EEO/AA/Minorities/Female/Veteran/Disability

Brittany Jo's Photography
Call 785-269-7112
Affordability for All Families
Customized Sessions - Able to Travel
Flexible Scheduling
Visit my Facebook Page or: brittanyjosphotography.pixieset.com

Small Ads BIG RESULTS
The Kansas Press Display Ad Network
Choose the entire state or a combination of zones that cover your target audience.
Ask your newspaper representative for complete details.
The 2x4 Network is a program of the Kansas Press Association.

RUBBER & SELF-INKING STAMPS
Many sizes & styles available
at
The Sheridan Sentinel
785-675-3321

PRESERVE... PROTECT... LAMINATE
The Sheridan Sentinel
785-675-3321

PROFESSIONAL SERVICES Directory

Hoxie Machine
Mill & Lathe Work
Call Briggs 785-657-0069

Woofert Pump & Well, Inc.
"For all your water well needs"
Lance & Coleen Shepard Owners
785-675-3991

HEIM BODY SHOP
Expert Body Repair & Paint
Windshield Repair & Replacement
Vehicle Accessories & Installation
Thunderstruck Grille Guards
Spray-in-Bed Liners
785-675-2182

Pratt Real Estate
LES PRATT - Broker & Auctioneer
724 Main - Box 583 - Hoxie, KS 67740
785-675-3011 Mobile: 785-675-8531
Fax: 785-675-3220
lpratt@ruraltel.net

***SEPTIC PUMPING* Elliott's**
Plumbing, Electrical, Heating & A/C
785-421-2240

Dennis Oelke CARPENTRY
New Construction
Remodeling
Custom Cabinets
785-675-3527
Hoxie, Kansas

JOB OPENING:
Hoxie Community Schools USD 412 is Hiring!
USD 412 is accepting applications for the following coaching positions for the 2021-22 school year.
HS Girls Head Basketball Coach
HS Boys Assistant Basketball Coach
JH Boys Head Basketball Coach
JH Assistant Football coach
If interested contact Lance Baar or Mark Wildeman at 795-675-3286 or lbaar@hoxie.org or mwildeman@hoxie.org

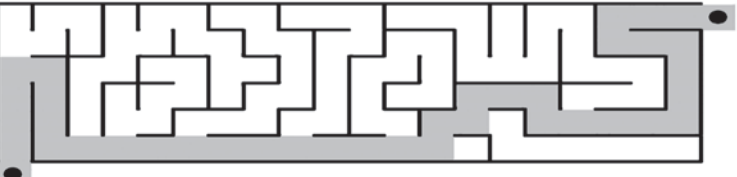
USD 292 is Hiring
USD #292 Wheatland School is accepting applications for Head of Maintenance for district facilities which includes Wheatland High School, Wheatland Elementary School, and all school owned property and bus/vehicle fleet. Applicant must obtain a KHDE water and waste water certificate upon employment. The position is a full time position. Starting date and wages will be negotiable with the right candidate. Bus driving may also be available. For a job description and application, please contact the USD #292 District Office at 785-673-4213 or stop at the USD #292 District Office at Wheatland High School, 2920 K 23, Grainfield, KS 67737.

Share Your News Here!
sentinel@sheridansentinel.com 785-675-3321

Built Stronger. Looks Better. Lasts Longer.
4677
HORSE BARNs | GARAGES | HOMES | SHOPS
Visit our website and YouTube channel to view thousands of projects and testimonials!
800-447-7436
mortonbuildings.com
MORTON BUILDINGS®
©2021 Morton Buildings, Inc. A listing of GC licenses available at mortonbuildings.com/licenses.

NEVER-FADE PHOTOS!
Special dye-sublimation process
MEMORIES SAY CHEESE
* colors won't FADE over time *
4" x 6" Prints 35c each
* colors won't RUN if wet *
Passport/Concealed Carry Photo \$15 each
The Sheridan Sentinel
785-675-3321
sentinel@ruraltel.net
716 Main Street, PO Box 78, Hoxie, KS 67740

Fun Page Solutions Kids' Maze Solution



Mega Maze Solution
A circular maze with a sheepdog puppy in the center.

CryptoQuip answer
I noticed a sheepdog puppy eating cantaloupe, so I called him my melon collie baby.

SNOWFLAKES solution
A snowflake-shaped number puzzle.

Puzzles4Kids Answer
A crossword puzzle grid with words filled in.

SCRAMBLERS solution
1. Medial 2. Freight; 3. Savory; 4. Pedal
Today's Word
EMPLOYED

Weekly SUDOKU Answer
A 9x9 Sudoku grid with numbers filled in.

Super Crossword Answers
A crossword puzzle grid with words filled in.



HOXIE STATE INSURANCE, INC.
824 Main - PO Box 378 - Hoxie, KS 67740
(785) 675-3263 - Fax (785) 675-3721
Winona Office (785) 846-7401
hoxieins@ruraltel.net
Clara Lou - Shane - Garrett - Dustin - Jana - Hannah
AUTO - FARM - HOME - CROP - HEALTH - LIFE



Kendra Barnes, AFIS, LUTCF
729 Main Box 688 | Hoxie
(785) 675-3661
kendra.salyers-barnes@fbfs.com
AgentKendra.com

FARM BUREAU FINANCIAL SERVICES

Auto | Home | Life | Annuities | Business | Farm & Ranch

Farm Bureau Property & Casualty Insurance Company, * Western Agricultural Insurance Company, * Farm Bureau Life Insurance Company * West Des Moines, IA. * Company providers of Farm Bureau Financial Services M191 (1-18)



GREAT PLAINS AUTO & HARDWARE

945 Main St. * PO Box 198
Hoxie, Kansas 67740
785-675-3274

BUMPER TO BUMPER
Auto Parts Specialists



MCAUTOOUTLET.COM
HOXIE: 740 Oak Ave. 785-677-3886
COLBY: 855 Davis Ave. 785-460-2886

TONY ZACH Jade



MEYER ELECTRIC LLC
HOXIE KS
785-675-3331
www.meyerelectric.com
COMPLETE ELECTRICAL CONTRACTOR

ELAND & PRATT, LLC
Attorneys at Law

Eland Title Company

736 Main
PO Box 565
Hoxie, KS 67740

elandlaw@ruraltel.net
785-675-3217




Mapes & Miller LLP
Certified Public Accountants & Business Advisors

Income Tax Preparation
Tax Projections
Farm & Business Planning
Bookkeeping & Payroll

Don E. Tilton, CPA
Stephanie M. Heier, CPA

CALL TOLL FREE TODAY
877-754-2111

230 Main Street
PO Box 537
Quinter, KS 67752
www.mmcpas.net

HIRSCH LAW OFFICE



Steven W. Hirsch
821 Main Street
Hoxie, KS 67740
785-675-3762

Watkins Realty and Ins. Agency, LLC

"Your Crop Insurance Headquarters"

Steven A. Watkins, MBA
Crop Insurance Specialist
901 Trail Ave.
P.O. Box 840
Hoxie, KS 67740
E-mail: watreins@ruraltel.net or watkinscroptax@yahoo.com

Toll Free: 1-800-232-3239
Office: 785-675-3239
Fax: 785-675-3230
Cell: 785-675-1017
Nights & Weekends: 785-675-9966
www.watkinscropinsurance.com



JnL Defense
Your Protection is Our Business
www.jnldefense.com

5981 N Road 20 W, Hoxie
Mill Lathe Keyways Welding

Hoxie Machine

Repairs & Custom Parts for:
Industry Motorcycles
Vintage Cars Farm equipment
Antique Tractors

785-657-0069 Briggs



Cressler Creek LOG CABIN LLC

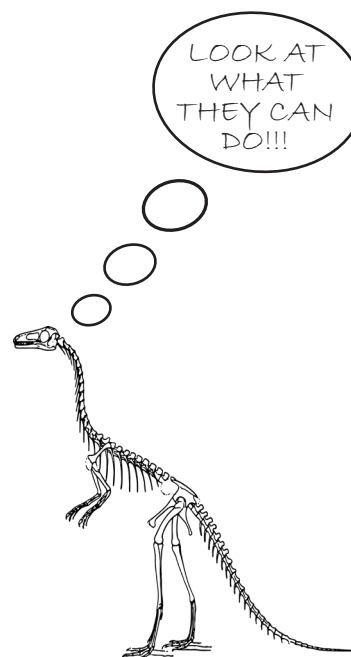
785-675-1295
www.cresslercreeklogcabin.com * "Like" us on Facebook



SENTINEL Graphics & Design
716 Main Street, Hoxie, KS 67740
For Custom Quotes:
Call 785-675-3321 or Email: sentinel@sheridansentinel.com



Our new Roland Printer will print up to 50" wide!



Blue DEF
DIESEL EXHAUST FLUID

2.5 Gallon Special
\$9.99/EA

Taylor
IMPLEMENT COMPANY

451 W Hwy 24, Hoxie KS 67740 (785) 675-3272 www.taylorimplement.com

Vinyl Decals

Windows, Vehicles, Magnets
High-quality images on vinyl!

Indoor/Outdoor Grommets available

Banners

Flyers

Events, Notices, Business, Personal

Temporary/Permanent Indoor/Outdoor

Stickers

Business Cards
Office Printing
Envelopes & More!



* Copies up to 11"x17"
* Office Supplies
Stop in or Call us Today!

BETTER BUILT TRAILERS

Grainfield, Kansas

785-673-5100



ADVERTISE HERE!

Brittany Lewis, - Advertising Rep
Sheridan Sentinel
to Promote Your Business HERE!
785-269-7112
advertising.sentinel@gmail.com

ADVERTISE HERE!